

**- CAREFULLY READ THESE INSTRUCTIONS -**

**RECOMMENDATION:** Rough in for both electrical and water heaters for possible future conversion.

**HEATER BOX PLACEMENT:** As per drawing with height adjusted such that the hatch is 0 mm to 6 mm (0" - 1/4") above the finished concrete surface.

**ELECTRICAL:**

**Power:** 30A service (with temporary 30A breaker for construction heater). Install 3/4" conduit and terminal adapter – conduit to be routed to a future local disconnect. Install wiring immediately for cold weather pour only.

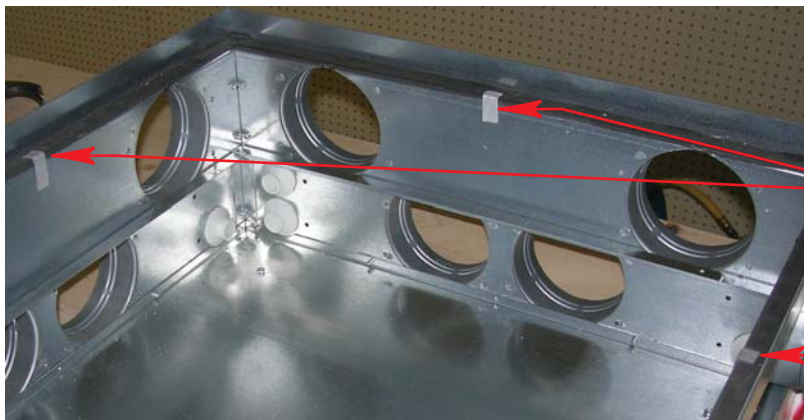
**Control Wiring:** Install one 3/4" conduit and terminal adaptor for 2 thermostat conductors.

**Boiler Interlock (optional):** Install one 3/4" conduit and terminal adaptor. For interlock, refer to 5200W Water Insert and Boiler Interface Product Data Sheets.

**WATER:** Install 2 sleeves (1" poly (75 PSI) or conduit) for feed and return water lines at locations shown below. Sleeves to terminate inside box. Install 1/2" water lines in sleeves and extend a minimum of 100 mm (4") inside box. Water line orientation MUST match drawing.

**ALL CONDUITS/SLEEVES TO TERMINATE ABOVE CONCRETE SLAB SURFACE AT A CONVENIENT LOCATION** (nearby wall or mechanical room). Seal conduit/sleeve exposed ends with duct tape prior to concrete pour.

**PRE-POUR PREPARATION:** Install inner lid, making sure temporary cover spacer angles are taped in place to the inside of the box. Install wood floor hatch with label side up. Seal hatch to heater box with duct tape to prevent concrete contamination.



Temporary spacer angles (remove after pour)

