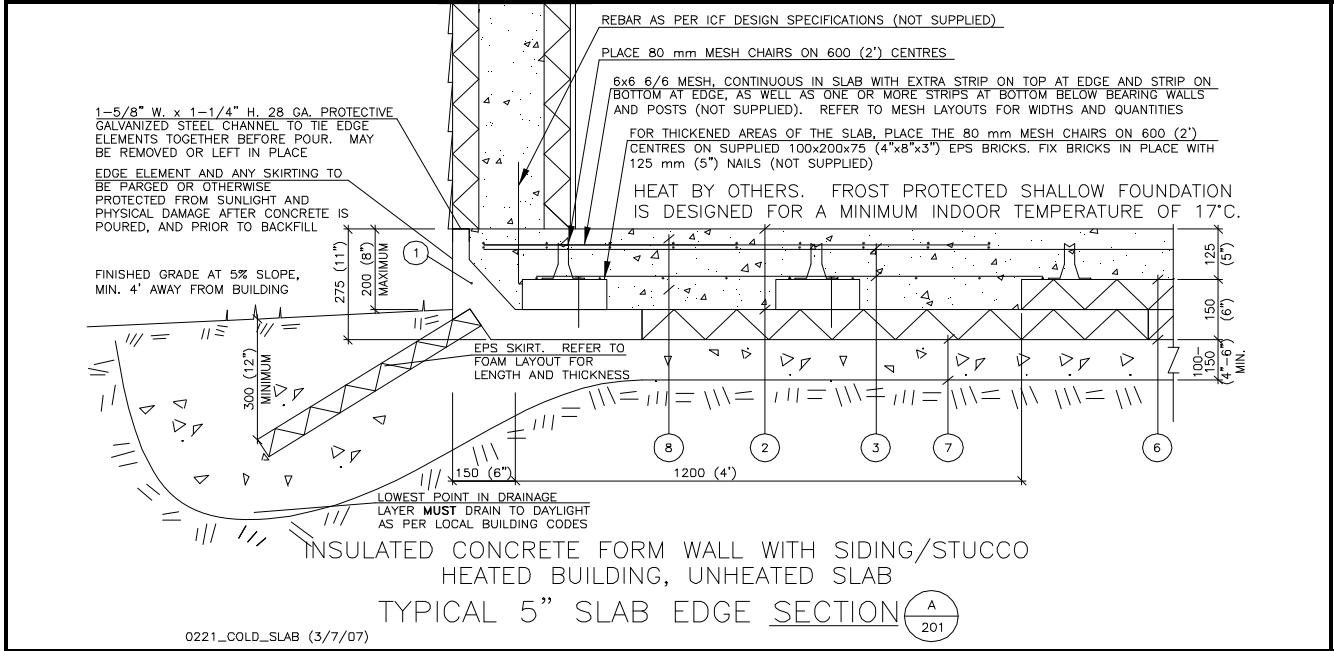


5" UNHEATED GEO-SLAB - HEATED BUILDING



Typical 5 inch unheated slab - heating building

NON LEGALETT SUPPLY

One Storey	Reinforcing -	continuous wire mesh layer on top 4'-10' wire mesh strip for top perimeter 4' wire mesh strip for bottom perimeter 4' wire mesh bottom strip for 1-story internal bearing walls
Two Storey	Reinforcing -	continuous wire mesh layer on top 4' wire mesh strip for top perimeter 4' wire mesh strip for bottom perimeter 2 - 4' wire mesh bottom strips for 2-story internal bearing walls 12' - 10M bars @ 1' perimeter spacing top steel for 2-story edge loading
Three Storey	use 8 inch slab	
Cold Porches	Reinforcing -	continuous wire mesh layer on top 2 - 2' wire mesh strips for top perimeter

This page represents typical details and reinforcement specification for LEGALETT GEO-Slabs. Each GEO-Slab, however, is designed to suit site specific loading geometry and site conditions.