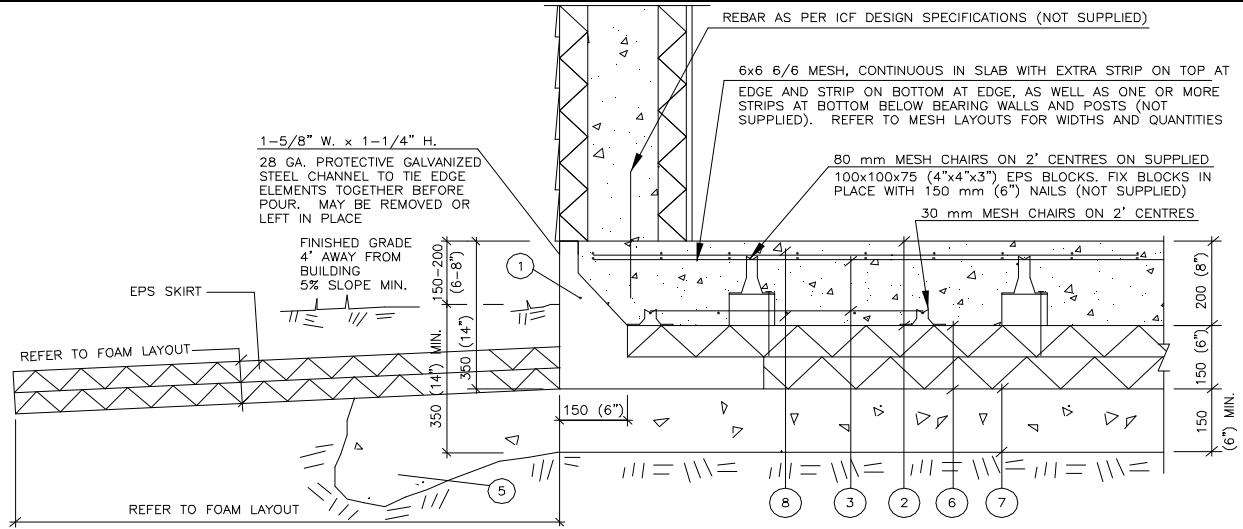


**8" UNHEATED GEO-SLAB - UNHEATED OR HEATED BUILDING**



UNHEATED SLAB INSULATED CONCRETE FORM WALL WITH SIDING

TYPICAL CONTINUOUS KONSOL SECTION

02211\_COLD\_SLAB (3/07/07)



Typical 8 inch cold Slab - non Legalett supply -use this when the AFI is over 600 AF

**NON LEGALETTS SUPPLY**

One Storey	Reinforcing -	continuous wire mesh layer on top 4'-10' wire mesh strip for top perimeter 2' wire mesh strip for bottom perimeter 4' wire mesh bottom strip for 1-story internal bearing walls
Two Storey	Reinforcing -	continuous wire mesh layer on top 4' wire mesh strip for top perimeter 2' wire mesh strip for bottom perimeter 2 - 4' wire mesh bottom strips for 2-story internal bearing walls 12' - 10M bars @ 1' perimeter spacing top steel for 2-story edge loading
Three Storey	Reinforcing -	continuous wire mesh layer on top 4' wire mesh strip for top perimeter 2'-4' wire mesh strip for bottom perimeter 4' - 10M bars @ 1' spacing bottom steel for 3-story internal bearing walls 12' - 15M bars @ 1' perimeter spacing top steel for 3-story edge loading
Cold Porches	Reinforcing -	continuous wire mesh layer on top 2 - 2' wire mesh strips for top perimeter

This page represents typical details and reinforcement specification for LEGALETTS GEO-Slabs. Each GEO-Slab, however, is designed to suit site specific loading geometry and site conditions.