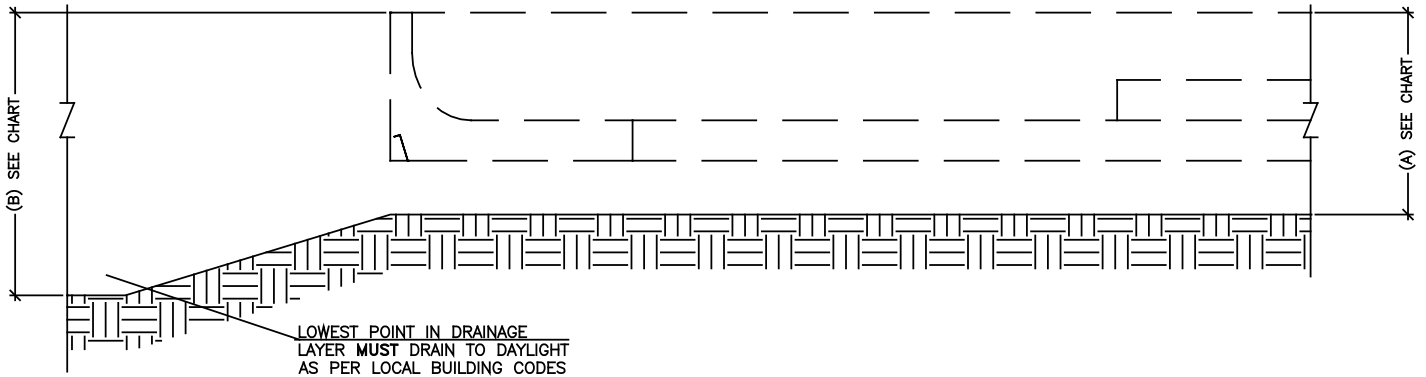


- READ THIS DATA SHEET IN CONJUNCTION WITH THE DESIGN DRAWING -
IMPORTANT: If installing the FROSTSHIELD skirting after the pour, you must remove the skirting notch prior to placing the edge elements. See Step 2.2

STEP 1.0 - EXCAVATION

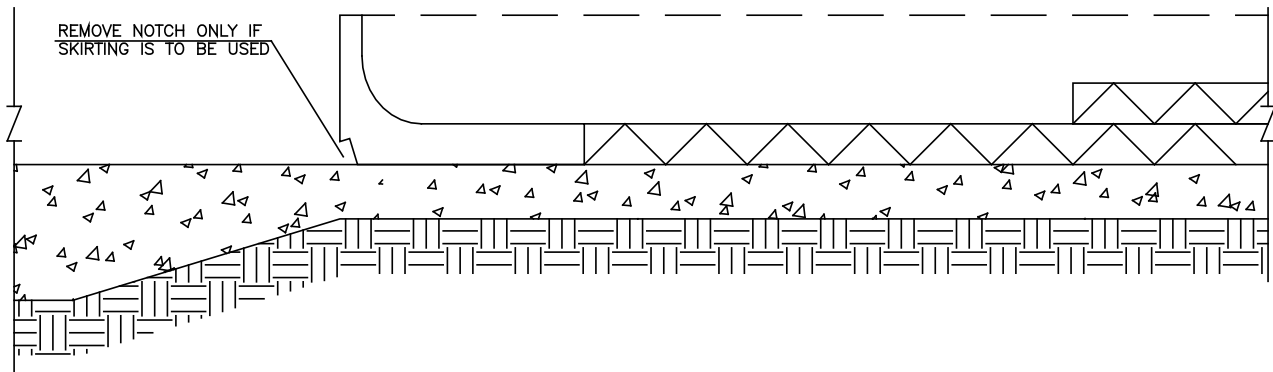
1. Size of excavation: Building size + FROSTSHIELD skirting width + 2 ft. on all sides.
2. Excavation depth is measured from finished slab surface (Elevation of top of slab for slab on grade shall allow for daylight drainage and 5% finished grade slope).



Depth Below HEATED BUILDING Slab Surface			Depth Below UNHEATED BUILDING Slab Surface		
Slab (A)	Building perimeter (B)	Clear Stone Allowance	Slab (A)	Building perimeter (B)	Clear Stone Allowance
Slab thickness plus 10"	Slab thickness plus 16"	4" Minimum	Slab thickness plus 12"	Slab thickness plus 18"	6" Minimum

STEP 2.0 - PLACE STONE, ASSEMBLE SLAB

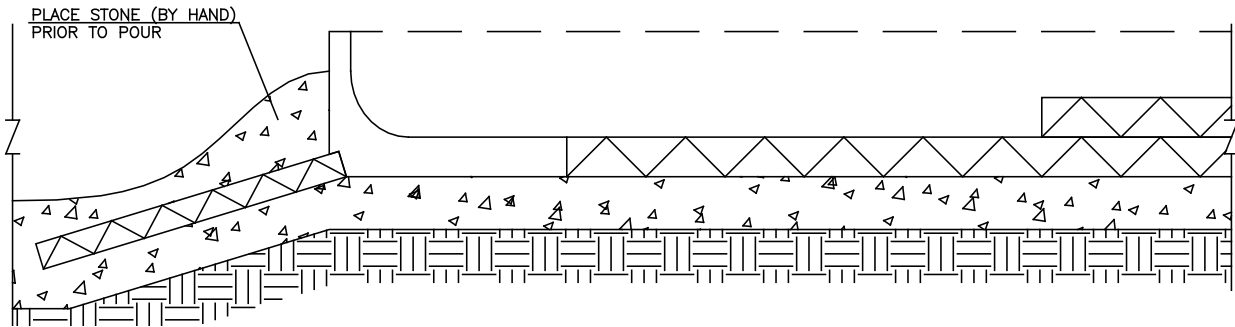
1. Place clear stone as per design drawing.
2. Assemble slab as per design drawing. If FROSTSHIELD skirting is to be used, remove skirting notch **BEFORE** placing edge element.



- READ THIS DATA SHEET IN CONJUNCTION WITH THE DESIGN DRAWING -

STEP 3.0 - FROSTSHIELD SKIRTING PLACEMENT (IF REQUIRED)

1. Rake stone to produce a 30% slope down from bottom of edge element and to expose pre-cut notch.
2. Place FROSTSHIELD skirting as per drawings and as illustrated below. **TAKE PHOTOGRAPHS OF INSTALLED FROSTSHIELD SKIRTING.**
3. Place stone on top of FROSTSHIELD skirting to secure in place.



STEP 4.0 - POUR

1. Pour concrete, keeping top of slab moist for 3 days.
2. Rake gravel back to allow for backfill as illustrated below, and parge, stucco or otherwise finish edge element.
3. Backfill and complete landscaping to finish grade (Minimum 5% slope away from building).

