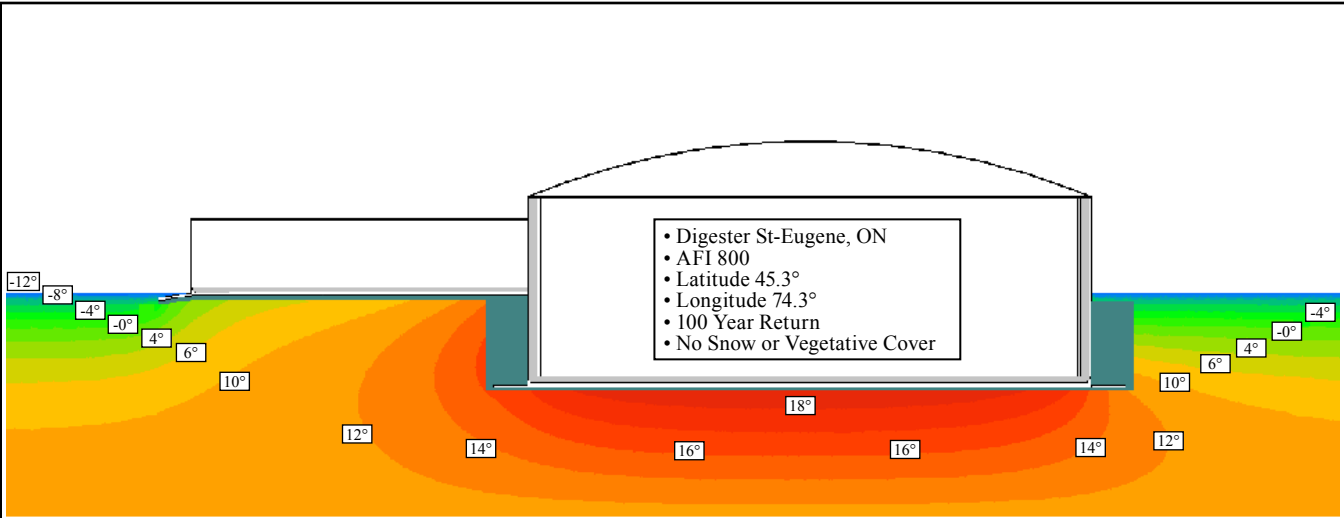


LEGALETT.



DESIGN PARAMETERS

Latitude:	45.3°
Longitude:	74.3°
Building location:	St-Eugene, ON
Building location elevation:	66.4 m / 218 ft.
Nearest weather station:	Hawkesbury, ON
Nearest weather station elevation:	51.2 m / 168 ft.
Nearest weather station average AFI in °C_Days:	1000
Design AFI:	1390
Design outdoor temperature:	-25° C / -13° F
Mean soil design temperature:	9° C / 48° F
Existing simulation ground temperature based on AFI:	8° C / 46° F
Building Area:	443.6 m² / 4,775 sq. ft.
Building perimeter:	154.5 m / 508 ft.



THE TEAM

Owners: **Heinzle Brothers / St-Eugene, ON**
Developer: **Genesys Biogas Inc. / Ottawa, ON**
Legalett Service Representative / Installer: ... **Jeff MacDonald & Keith Chisholm - Foam Geometrix**
Hawkesbury, ON / (613) 632-8402

PROJECT DESCRIPTION

LEGALETT

WHY LEGALETT ?

“Legalett was used as the foundation for the construction of the anaerobic digesters built for both Terryland Farms and Pinehedge Farms in St. Eugene, Ontario in 2006.

Tanks hold liquid manure, which produces methane gas during the anaerobic process. The gas is then burned in a combustion engine in conjunction with a generator to produce electricity. The electricity is then sold to local electrical suppliers.”

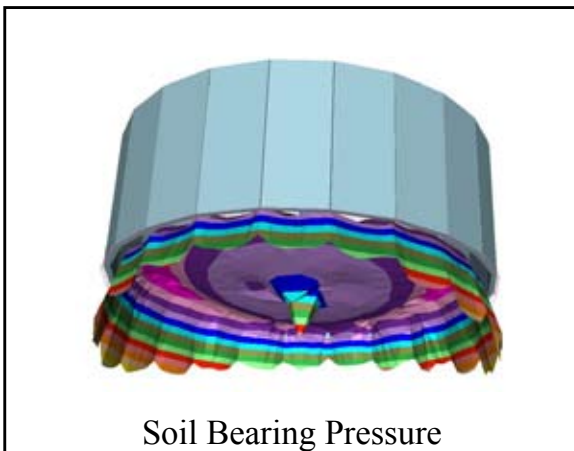
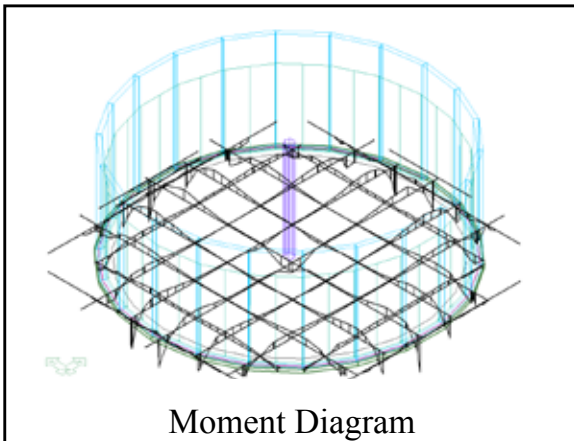
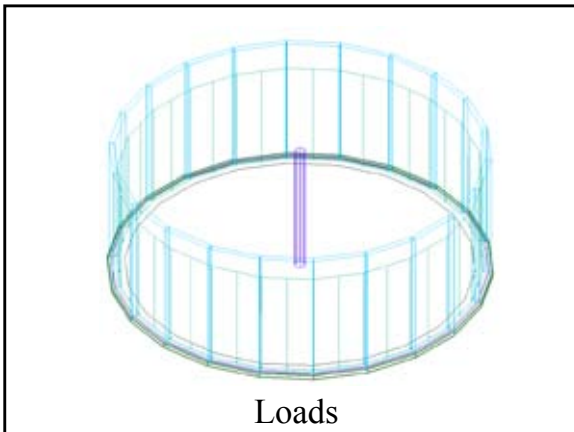
Jeff MacDonald & Keith Chisholm
- (Foam Geometrix)

“The main reasons Legalett was chosen over conventional footing and slab design were:

- Simplicity of the Stay-in-place formwork (insulation)
- Engineering included
- Insulation value achieved
- Used in wide variety of soil conditions (no need for piles)
- Less chance of encountering leakage because of fewer construction joints.”

Genesys Biogas Inc.
- (Ottawa, ON)

STRUCTURAL



INSTALLATION

