



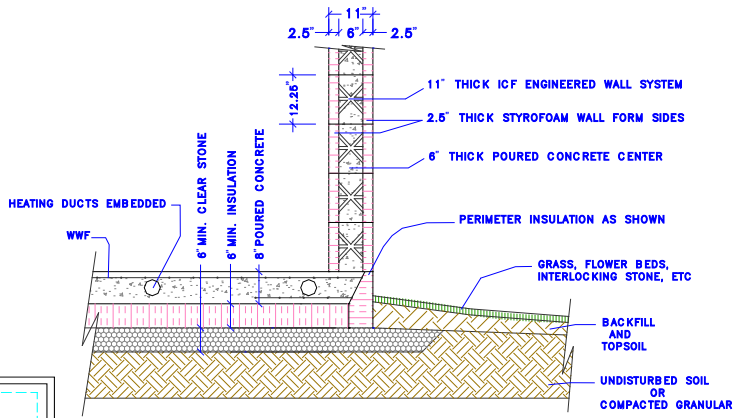
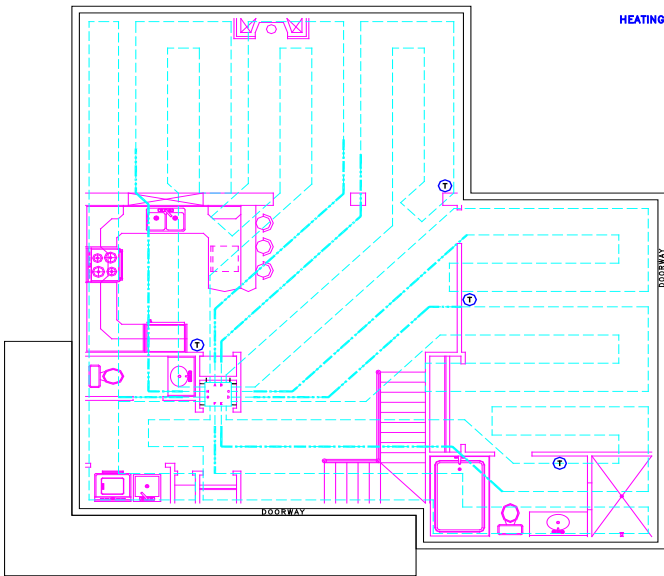
This two-story, three bedroom home, located on the shores of the Upper Rideau Lake, was built on a Legalett designed Frost Protected 8" Air-Heated "Slab On Grade".

Exterior walls were constructed using energy efficient Insulated Concrete Forms (ICF).

The mechanical aspect consists of one Legalett water coil heater, heating four independent zones by means of programmable thermostats.

Long term benefits of choosing the Legalett system:

- Reduced construction time (1 pour), compared to conventional foundation (3 pours)
- Reduced overall cost of foundation & heating system combined
- Warm comfortable floors with no drafts



SLAB & EXTERIOR WALL - DETAIL

Location: ... **Rideau Lakes Twp, ON**

Sales Rep: . **ICF Rideau**

Installer: **Teixeira Construction**

Heated "Slab on Grade" Area: **1,365 sq. ft.**

Unheated Exterior Porch Area: **182 sq. ft.**

" Designed for Comfort, Engineered for Simplicity "

WWW.LEGALETT.COM

• 1-866-299-7567

• sales@legalett.ca