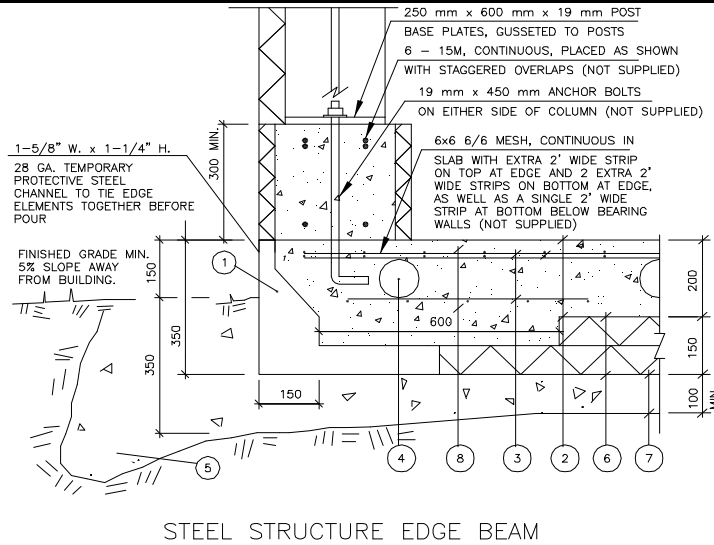


**COMMERCIAL GEO-SLAB**



STEEL STRUCTURE EDGE BEAM

TYPICAL CONTINUOUS KONSOL SECTION



0221:STEEL (3/07/07)

Typical 8 inch heated slab - commercial building with above grade knee wall

**NON LEGALETT SUPPLY**

Reinforcing - top wire mesh layer  
 top perimeter wire mesh strip 4'  
 bottom perimeter wire mesh strip 2'  
 4' - 10M bars @ 1' spacing bottom steel for 3-story internal bearing walls  
 12' - 15M bars @ 1' perimeter spacing top steel for 3-story edge loading  
 15M bars for perimeter knee wall (4-8)

Cold Porches Reinforcing - continuous wire mesh layer on top  
 2 - 2' wire mesh strips for top perimeter

This page represents typical details and reinforcement specification for LEGALETT GEO-Slabs. Each GEO-Slab, however, is designed to suit site specific loading geometry and site conditions.